



Grade 1

OLYMPIAD 2023 - 24

SCIENCE

Total Questions: 35

Total Marks: 35

Time: 1hr

Set: A

Question: 1 of 35

QID: 21815

Marks: 1

What do we call the gas that we breathe out when we exhale?

- A. Oxygen
- B. Nitrogen
- C. Carbon Dioxide
- D. Hydrogen

Question: 2 of 35

QID: 21798

Marks: 1

Complete the Pattern AB, EF, I J \_\_\_\_\_

- A. KL, OP,QR
- B. MN, OP,QR
- C. MN,QR,UV
- D. MN, QR,ST

Question: 3 of 35

QID: 21802

Marks: 1

A red light in the traffic light signal indicates

- A. Go
- B. Stop
- C. Wait
- D. None

Question: 4 of 35

QID: 21803

Marks: 1

Which of them is/are correct for Parrots?

- A. Have feathers
- B. Lay eggs
- C. Both A & B
- D. Only A is correct

**Question: 5 of 35**

QID: 21825

Marks: 1

Peter is playing in the park with his friends, he sees a plant and tells them that this is a Climber. Can you identify which plant is he talking about?

- A. Rose
- B. Guava
- C. Grapes
- D. Turnip

**Question: 6 of 35**

QID: 21797

Marks: 1

Forces make things move. What kind of force is shown?



- A. Push
- B. Pull

**Question: 7 of 35**

QID: 21809

Marks: 1

What do we call the line that divides the Earth into the Northern Hemisphere and the Southern Hemisphere?

- A. Tropic of Cancer
- B. Equator
- C. Tropic of Capricorn
- D. Division Line

**Question: 8 of 35**

QID: 21804

Marks: 1

In winters what are you most likely to wear?

- A. Woollen clothes
- B. Cotton clothes
- C. School uniform
- D. Apron

Which of the following students is/are correct?

Betty: Minerals are important for bones and teeth.

Sandy: Vitamins are not required by our body.

- A. Betty is correct but Sandy is incorrect.
- B. Both Betty and Sandy are correct.
- C. Both Betty and Sandy are incorrect.
- D. Betty is incorrect but Sandy is correct.

what is the Shape of the Cricket Ball?

- A. Square
- B. Circle
- C. Oval
- D. Triangle

The camels drink from a puddle.



What need does this meet?

- A. Air
- B. Water
- C. Food
- D. Sunlight

**Question: 12 of 35**

QID: 21810

Marks: 1

Which of these is a source of clean, fresh air?

- A. Closed room with no windows
- B. A busy road with traffic
- C. A crowded elevator
- D. A park with lots of trees

**Question: 13 of 35**

QID: 21826

Marks: 1

You can neither see "X" nor you can touch it, and you cannot survive if it is not there. Name "X"

- A. Pollution
- B. Air
- C. Water
- D. Soil

**Question: 14 of 35**

QID: 21795

Marks: 1

Which object is Longer?

- A. A Clock Tower
- B. A Car
- C. A Ruler/Scale
- D. All are of same length

**Question: 15 of 35**

QID: 21814

Marks: 1

What do we call the layer of air around the Earth?

- A. Space
- B. Beach
- C. Ocean
- D. Atmosphere

**Question: 16 of 35**

QID: 21821

Marks: 1

Which of the following is correctly grouped based on their food habits?

- A. Lion, Cow, Bear
- B. Monkey, Parrot, Eagle
- C. Cow, Horse, Deer
- D. Zebra, Tiger, Rat

A Bullock Cart is made up of

- A. Living thing
- B. Non-Living thing
- C. Both Living & Non-Living
- D. Only Non-Living

Given picture is of a



- A. Climber
- B. Creeper
- C. A tree
- D. A shrub

Which of the following statement is true?

- A. Raincoat is not used in the rainy season.
- B. Woollen clothes are used in winters
- C. Cotton clothes are not used in summers
- D. All statements are true

Things shown below are found in



- A. Bathroom  
 C. Drawing room

- B. Bedroom  
 D. Kitchen

## Question: 21 of 35

QID: 21799

Marks: 1

Why is it important to follow traffic rules when crossing the road or walking on the street?

- A. To avoid accidents and stay safe  
 C. To have more fun

- B. Because rules are boring  
 D. To make the traffic lights happy

**Question: 22 of 35**

QID: 21820

Marks: 1

What is defined as the day to day change in the atmosphere?

- A. Weather
- B. Climate
- C. Global Warming
- D. Greenhouse effect

**Question: 23 of 35**

QID: 21824

Marks: 1

Which of them can survive without food?

- A. Pea Plant
- B. Kittens
- C. A balloon
- D. Giraffe

**Question: 24 of 35**

QID: 21800

Marks: 1

Which of the following comes from a living thing?

- A. A metal box
- B. A coin
- C. A log of wood
- D. The Moon

**Question: 25 of 35**

QID: 21813

Marks: 1

What do we call the drops of water that fall from the sky on a rainy day?

- A. Rain drops
- B. Snowflakes
- C. Hailstorms
- D. Icestones

**Question: 26 of 35**

QID: 21827

Marks: 1

Read the given situation and answer the following question: Sophia has just reached home. Her hair and clothes are wet. She is sneezing. What could she have faced on her way back home?

- A. Storm
- B. Famine
- C. Earthquake
- D. Rain



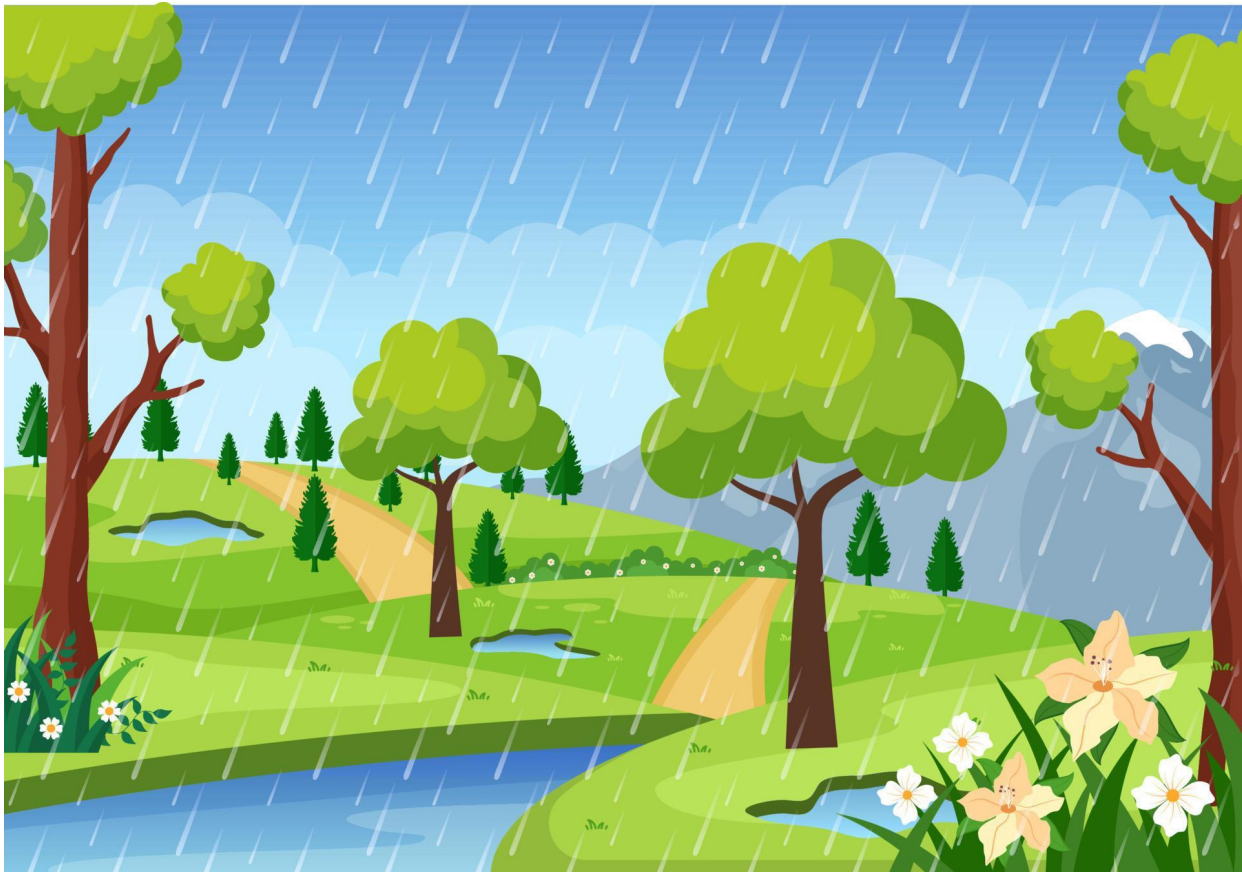
Is a cloud a living or non-living thing?

- A. Living
- B. Non-Living
- C. Both Living & Non-Living
- D. None of these

Why should you wear a helmet while riding a bicycle?

- A. To show off to others
- B. To protect your head in case of a fall
- C. Because your friends wear them
- D. Because helmets look cool

What are you most likely to wear on the weather as shown in the picture below



- A. A fancy dress
- B. Raincoat
- C. Apron
- D. Socks



Question: 30 of 35

QID: 21807

Marks: 1

Phases of Moon are the \_\_\_\_\_.

- A. Dots present on the Moon
- B. Movement of the Moon
- C. Changing shapes of the Moon
- D. Stars present in the sky

Question: 31 of 35

QID: 21819

Marks: 1

What do plants need to grow tall and strong?

- A. Blankets
- B. Vegetables and Fruits
- C. Sunlight
- D. Music

Question: 32 of 35

QID: 21796

Marks: 1

If an object "Y" is Heavier than an object "X" and an object "Z" is Heavier than an object "Y" then which is the Lightest?

- A. Object X
- B. Object Y
- C. Object Z
- D. None of these

Question: 33 of 35

QID: 21818

Marks: 1

How does a seed grow into a plant?

- A. By germinating
- B. By dancing to it
- C. By Keeping it in Cupboard
- D. None of these

Question: 34 of 35

QID: 21805

Marks: 1

I have my own light and planets revolve around me. Who am I?

- A. The Moon
- B. Jupiter
- C. A star
- D. The Sun

We eat the stem of

A. Potato

B. Tomato

C. Cabbage

D. Mango

-- END OF QUESTION PAPER --